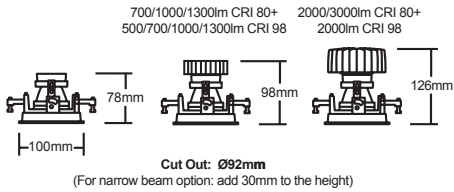
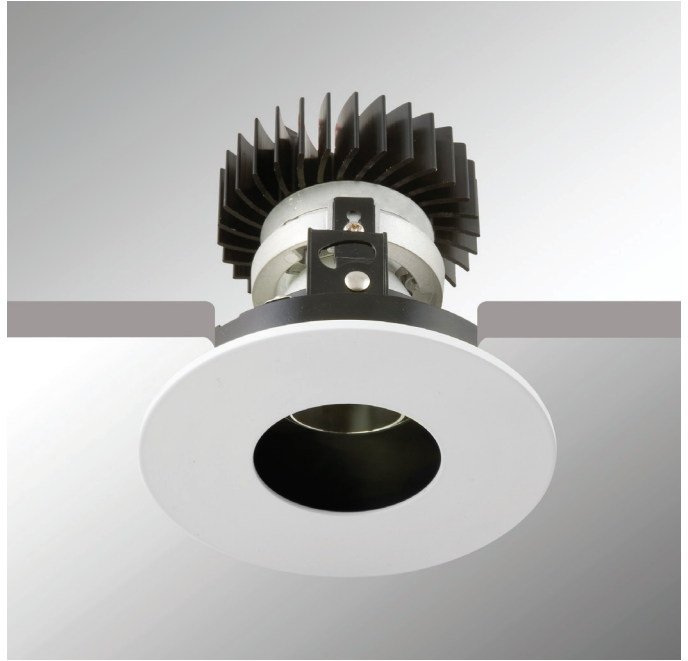


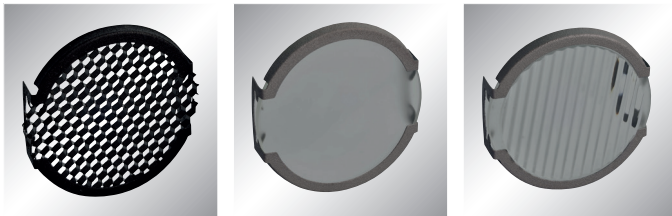
# 90 SERIES PIN HOLE

- Recessed low glare downlight
- Die-cast construction
- AlphaLED Fast Fix mechanism
- Black glare control baffle
- Supplied with pre-wired remote non-dimming driver



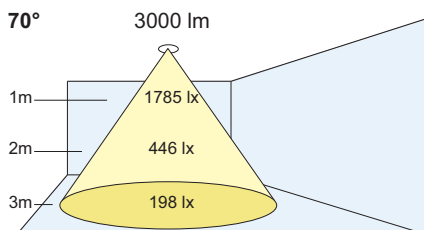
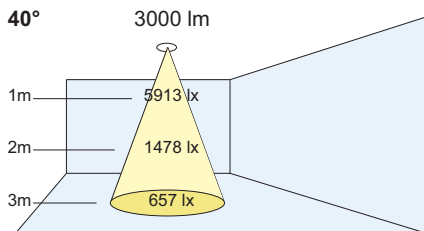
## Accessories

To order, use the following suffix



- /HL Honeycomb louvre
- /SL Softening Lens
- /RG Ribbed Spreading Glass

## PRODUCT CODE



### Lumen Output:

- (05) 500 lm
- (07) 700 lm
- (10) 1000 lm
- (13) 1300 lm
- (20) 2000 lm
- (30) 3000 lm

### Colour Temps:

- (27) 2700K
- (30) 3000K
- (35) 3500K
- (40) 4000K

### Colour Rendering:

- (V8) Vibrancy 80
- (V9) Vibrancy 98
- (80) CRI 80+
- (98) CRI 98

(CRI 98 / V9 up to 2000 lumens)

### Beam Angles:

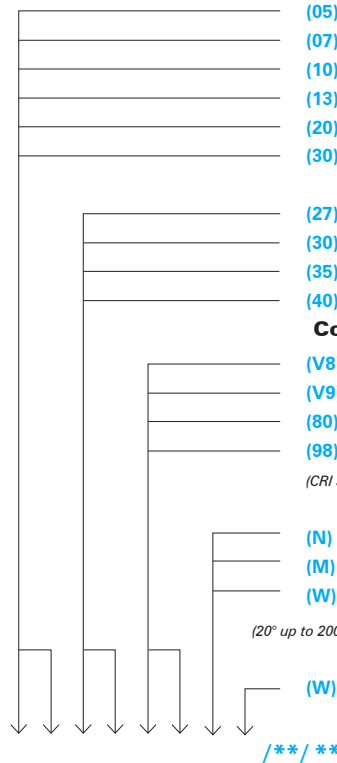
- (N) Narrow: 20°
- (M) Medium: 40°
- (W) Wide: 70°

(20° up to 2000lm CRI 80 & 1300 CRI 98)

### Colour:

- (W) White

P1



### Options:

- Dimming:**
  - /DT Trailing Edge
  - /DL Leading Edge
  - /DD DALI
  - /DA Analogue (1-10V)
  - /LT Lumentalk
- /M3 3Hrs Maintained
- /ST Self Test
- /DE DALI Emergency

(Other dimming options available see page 123)