

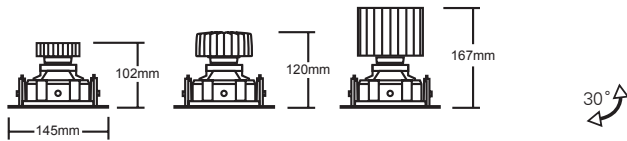
GYRO SERIES CUBE

- Square gimbal downlight with gyroscopic movement
- Die-cast construction
- Lockable tilt mechanism
- AlphaLED Fast Fix mechanism
- Supplied with pre-wired remote non-dimming driver
- Trimless option with skim bead
- Glare control accessories available

700/1000/1300lm CRI 80+
700/1000/1300lm CRI 98

2000lm CRI 80+
2000/3000 CRI 98

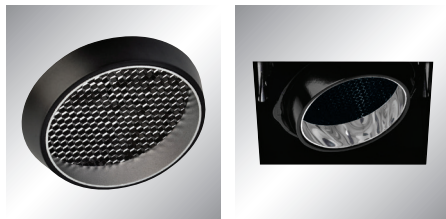
3000/4000lm CRI 80+
2000/3000 CRI 98



Cut Out: 132mm x 132mm
(For spot beam option, add 30mm)

Accessories

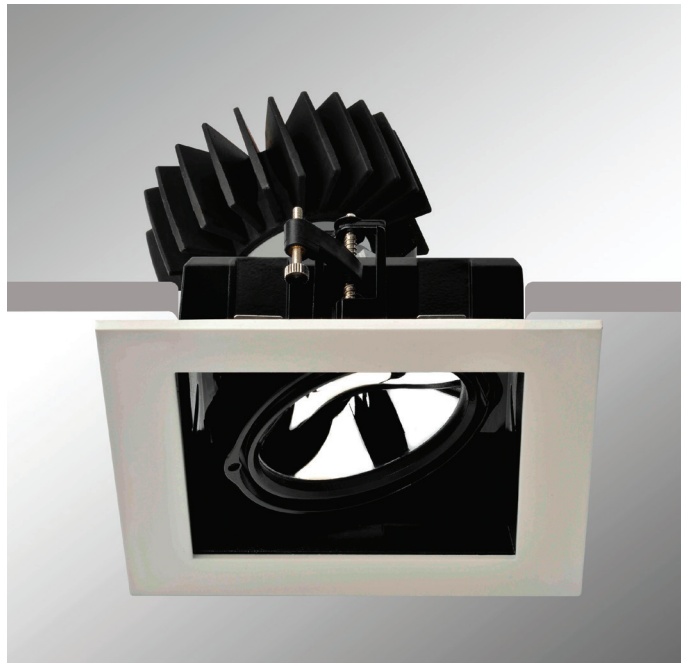
To order, use the following suffix



Snoot

Trimless Aperture

- /SN Snoot
- /HL Honeycomb louvre
- /SL Softening Lens
- /CG Clear Glass
- /WB White inner body and gyro rings



TRIMLESS
Product Code **1T**

PRODUCT CODE

Lumen Output:

(07)	700 lm
(10)	1000 lm
(13)	1300 lm
(20)	2000 lm
(30)	3000 lm
(40)	4000 lm

Colour Temps:

(27)	2700K
(30)	3000K
(35)	3500K
(40)	4000K

Colour Rendering:

(V8)	Vibrancy 80
(V9)	Vibrancy 98
(80)	CRI 80+
(98)	CRI 98

(CRI 98 / V9 up to 3000 Lumens)

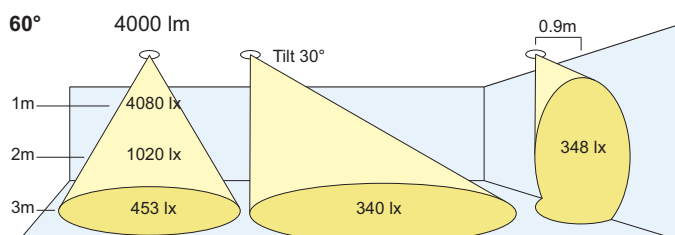
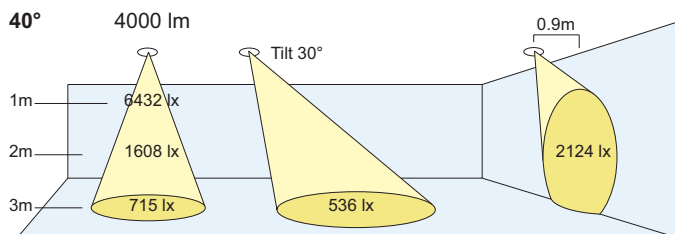
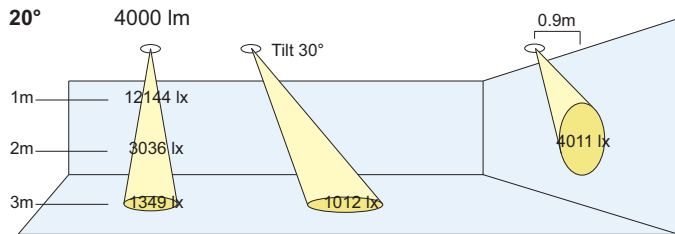
Beam Angles:

(S)	Spot: 10°
(N)	Narrow: 20°
(M)	Medium: 40°
(W)	Wide: 60°

(10° up to 2000lm CRI 80 & 2000 CRI 98)

Colour:

(W)	White
(N)	Nickel Satin
(B)	Black
(X)	Trimless



GC

--- / ** / **

Options:

Dimming:

- /DT Trailing Edge
- /DL Leading Edge
- /DD DALI
- /DA Analogue (1-10V)
- /LT Lumentalk

- /M3 3Hrs Maintained
- /ST Self Test
- /DE DALI Emergency

(Other dimming options available see page 123)