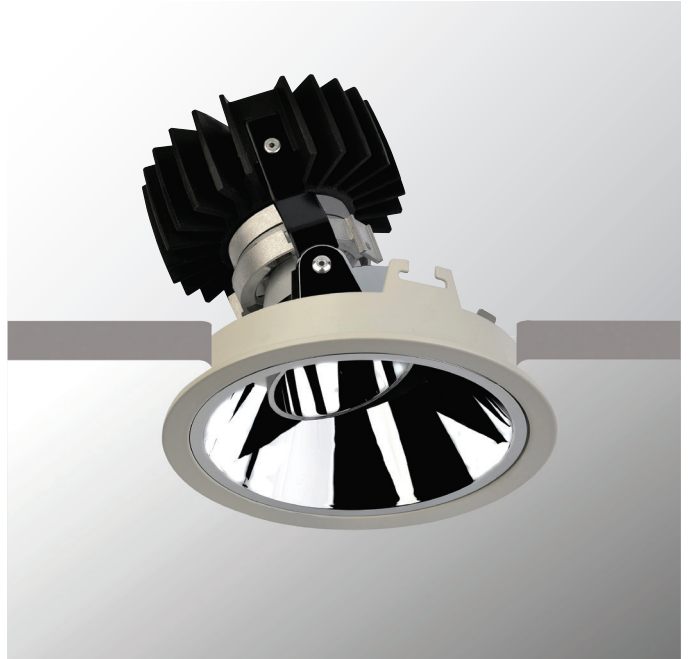
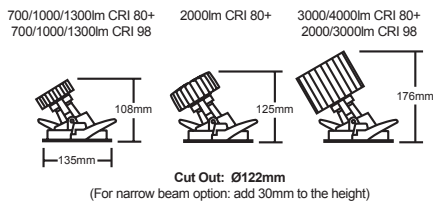


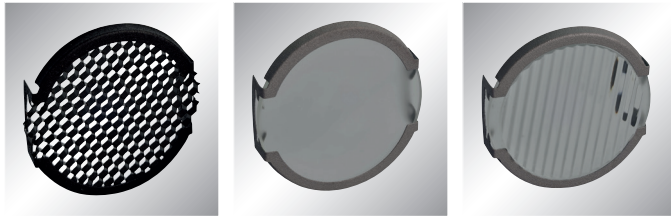
# 120 SERIES WASHER

- Adjustable wallwasher
- Reduced glare with dark light appearance
- Various reflector and lumen options
- Supplied with pre-wired non dimming driver
- Ideal replacement for halogen and metal halide



## Accessories

To order, use the following suffix



- /HL Honeycomb louvre
- /SL Softening Lens
- /RG Ribbed Spreading Glass

## PRODUCT CODE

### Lumen Output:

(07)	700 lm
(10)	1000 lm
(13)	1300 lm
(20)	2000 lm
(30)	3000 lm
(40)	4000 lm

### Colour Temps:

(27)	2700K
(30)	3000K
(35)	3500K
(40)	4000K

### Colour Rendering:

(V8)	Vibrancy 80
(V9)	Vibrancy 98
(80)	CRI 80+
(98)	CRI 98

(CRI98 / V9 up to 3000 lumens)

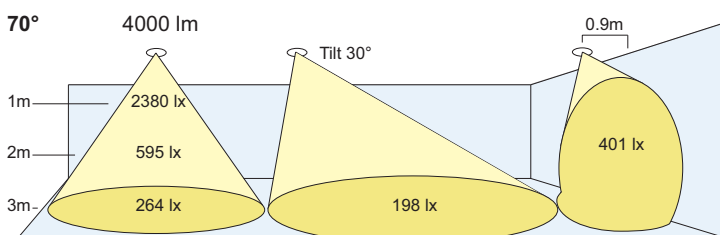
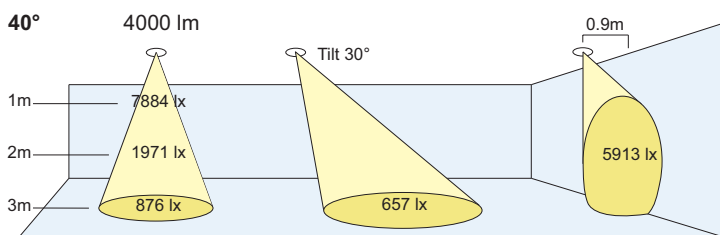
### Beam Angles:

(N)	Narrow: 20°
(M)	Medium: 40°
(W)	Wide: 70°

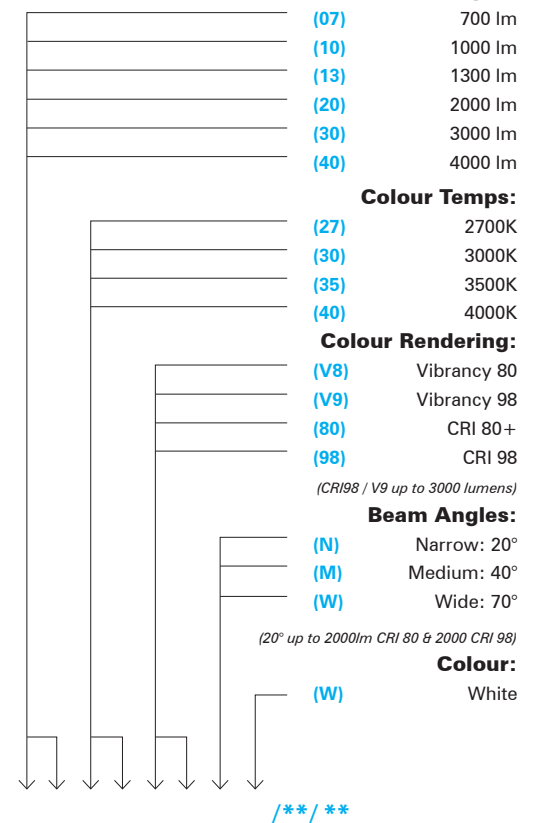
(20° up to 2000lm CRI 80 & 2000 CRI 98)

### Colour:

(W)	White
-----	-------



W1



### Options:

#### Dimming:

- /DT Trailing Edge
- /DL Leading Edge
- /DD DALI
- /DA Analogue (1-10V)
- /LT Lumentalk

- /M3 3Hrs Maintained
- /ST Self Test
- /DE DALI Emergency

(Other dimming options available see page 123)